

Penthouse	Unit5A	B.B.
-----------	--------	------

TWELVE ON V

“Architecture is inhabited sculpture.”

Constantin Brancusi

TWELVEONV

Emerging from its beautiful seaside surroundings is **TWELVEONV**. Basking in the beauty of Bantry Bay this ocean-inspired structure shimmers with energy and cascades upwards, from the Atlantic to Lion's Head. These natural elements of mountain and coastline have guided the narrative of the architecture and fittingly the abundance of glass takes full advantage of the incredible views from this sanctuary above the sea and the city.

A North-facing 25m lap pool and deck, gymnasium and day room for visiting staff have been created to suit the modern living needs of residents here.

In this exquisite penthouse adorning the top of **TWELVEONV**, space has been maximised by implementing a cantilever, expanding the living areas of the top floor and giving you an entertainment deck in the sky.

From every angle the building is exceptional, elevating the aesthetic appeal of an already beautiful neighbourhood. At the foot of a mountain, at the edge of the sea, lies your new home **TWELVEONV**.



CONTENTS

A Message from Blok

08

A Message from the Architects

10

A Word on the Design

14

Unique Spec

20

Floor Plans

21

A Message from Chris Weylandt

38

Neighbourhood Map

42





Jacques van Embden - Managing Director of Blok
@JacquesvEmbden

We launched **TWELVEONV** two years ago with much enthusiasm, as we were looking to add to the architectural aesthetic of Bantry Bay and its iconic Victoria Road. Having spent the past two years hard at work getting the project from concept through to completion we are incredibly proud of how the building emerges from the street edge with its dramatic steel façade contrasted against soft curves and dappled lighting penetrating through the aluminium screen.

The boutique building is crowned on its top floors by the Penthouse, which we are excited to bring to the marketplace.

The triplex home is flooded with light from every direction with this being complemented by the sweeping 360-degree views available throughout, ensuring the iconic natural features of the Atlantic Seaboard are a part of

everyday life. The architects designed the spaces with an emphasis on the indoors blending seamlessly with outdoor living, with each space having its own relationship to the exterior which successfully blurs the line between inside and out. This ensures each room or area expands into the fantastic weather and lifestyle we look for in Bantry Bay.

The jewel of the crown is the stunning deck perched on the roof with only the sky as your ceiling. This unique space is the ultimate in outdoor living with design consideration being given to each activity, whether lounging in the sun, enjoying a sunset with friends or lazing by the pool... simply breathtaking.

We invite you to share in our celebration of this boutique building and the urban home we call **5a**.



Marco van Embden - Chairman of Blok

It gives me much pleasure to write a few words of introduction for our first “Blok-seambuster” penthouse apartment.

A triplex masterpiece of design with carefully crafted spaces, amazing views, and all the modern amenities you would expect without having to ask; a pool, gym and much more. And of course, the views of the mountain and the sea. Bantry Bay at its wind-free best.

To top it all off, the Blok design team have finished the penthouse interior with style, fully fitted out by our brand partner Weylandts, to the finest and last detail.

In my opinion, it is not often you will find a unique blend of so many special features encompassing this penthouse; the building (inside and out) as well as the neighbourhood and all it has to offer.

I predict that in twenty years time, this urban home will be as unique and exciting as it is today, and of course infinitely more valuable. Come and see for yourself.

My compliments to Jacques, the architects, builders and the entire Blok team who made this magnificent penthouse a reality.

A MESSAGE FROM THE ARCHITECTS



Eric van den Berg

“The **TWELVEONV** penthouse is the crown jewel of this project as it really attempts to re-examine the upper limits of city living. It is a project that pushes towards the future of urban living without forgetting what makes a really great home. The connection and flow between spaces has been carefully considered and have been designed to overlap and flow into each other.” – Eric van den Berg

The location of the building makes this penthouse a rare find in coveted Bantry Bay, situated so close to the ocean, promenade and bustling Regent Road. The penthouse is generous and luxurious, while still being warm and comfortable and the use of glass takes advantage of the breathtaking views that surround it.



Erik Janse van Rensburg

The penthouse is split over three levels, with each level offering a different use to the owner; sleeping, living and entertaining. “A large volume with seemingly suspended stairs connects the three levels, adding to the sense of grandeur and contributing to the incredible light throughout this apartment.” – Erik Janse van Rensburg

In both its aesthetic and spatial design, **TWELVEONV** breaks away from the norm of what a residential development should look and live like.





A WORD ON THE DESIGN



Holly Hamlyn - Interior Co-ordinator

This penthouse is really something special. Each area has been meticulously designed, working alongside the architects, every detail has been considered. A thread of dark moody colours run throughout the interiors, more focused in certain areas creating dramatic, textured and unique elements.

A dark steel cladding adds an industrial component to the TV unit; this, complete with a wood-burning fireplace is the living room's focal point.

The kitchen is a lighter space. It incorporates white marble, adding depth whilst offsetting the matte black taps, creating an instant wow factor and the ultimate stylish feature. The sleek Smeg Dolce Stil Novo ovens and hob seem far too beautiful to use. The bespoke bar provides storage behind the elegant tinted

glass doors. The upper steel frame keeps the structure light allowing an uninterrupted view to the outside and the oak staircase, which adds a dynamic diagonal with its geometric stringer.

In the master bedroom, the bed sits in front of an oak-cladded wall that continues along the ceiling. Flanking the centrally placed bed, are two raised wings which form a dressing room and lounge on one side with dark framed, glass sliding screens separating the en-suite on the other. The asymmetrical bath, beautiful grey tiles and the black fittings create the perfect, luxurious bathroom.

From the top quality fittings and finishes to bespoke joinery and appliances, no aspect of this apartment has been overlooked.







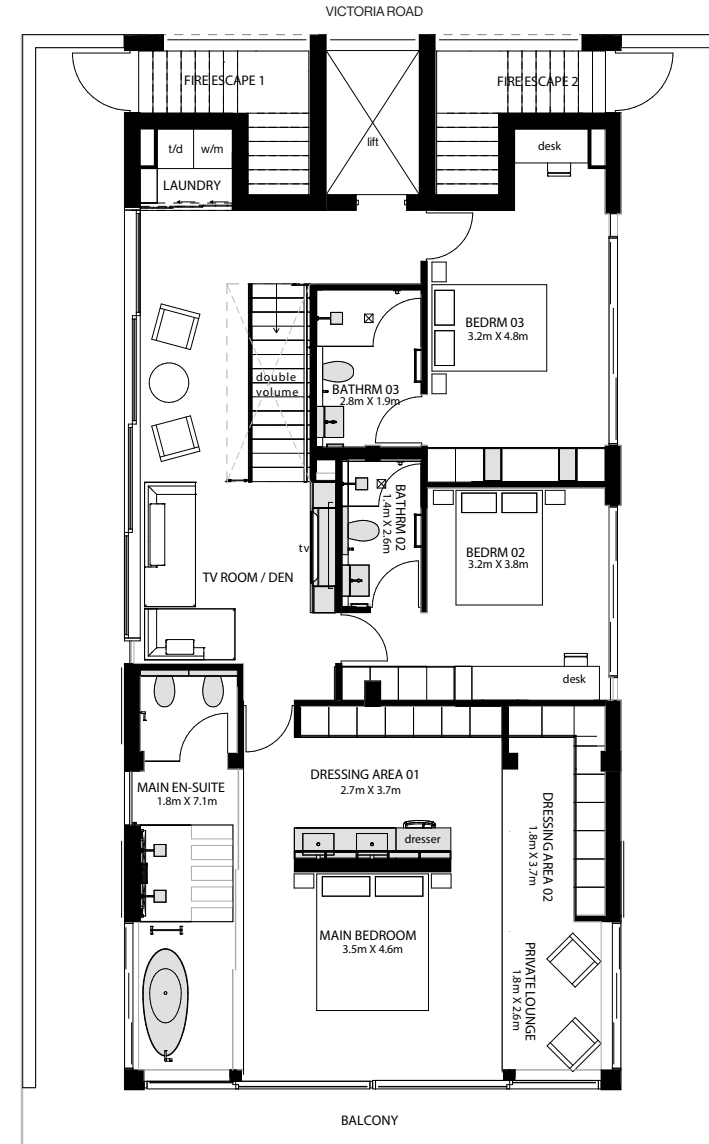
UNIQUE SPEC

- Fully furnished by Weylandts:
Including cutlery, crockery & glassware
- Full suite of Smeg appliances:
Fridge, washing machine, tumble dryer, dishwasher and the Dolce
Stil Novo range of ovens & hobs
- Built-in joinery:
Bespoke TV unit and steel-framed bar unit
- Private lift access into living & sleeping levels
- Double glazing in main bedroom
- Wood-burning fireplace
- Hard oak flooring in all living areas & bedrooms
- Underfloor heating in all bathrooms & scullery
- Matte black fittings throughout
- Ducted air-conditioning throughout
- Smart Home functionality
- Fibre-optic cabling

UNIT 5A

Sixth Floor - Sleeping

Three Bed Three.5 Bath 238 Interior 268 Exterior 506 Total Two Garages One Parking Storeroom



Level One
145 Interior
90 Exterior
235 Total

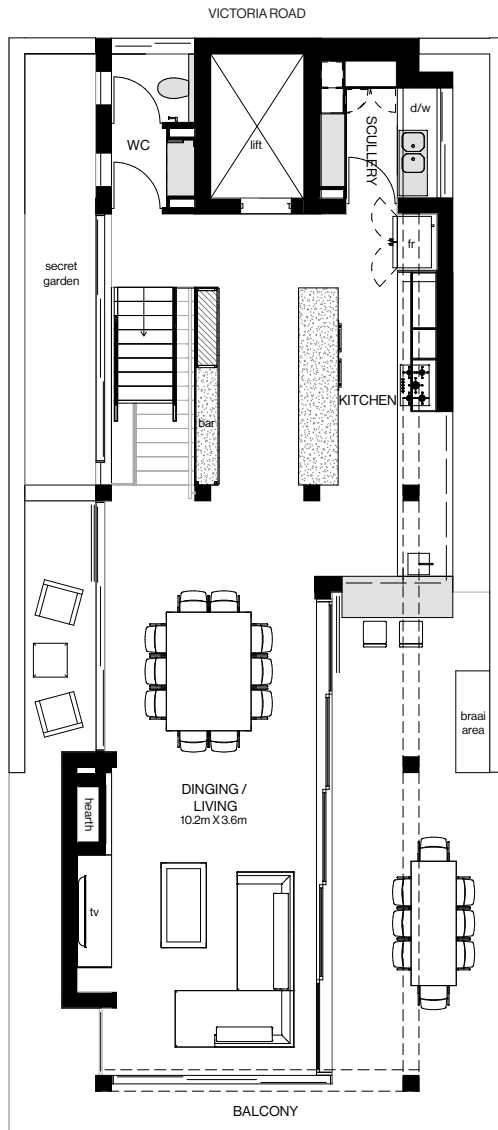






UNIT 5A

Seventh Floor - Living



Level Two
93 Interior
74 Exterior
167 Total

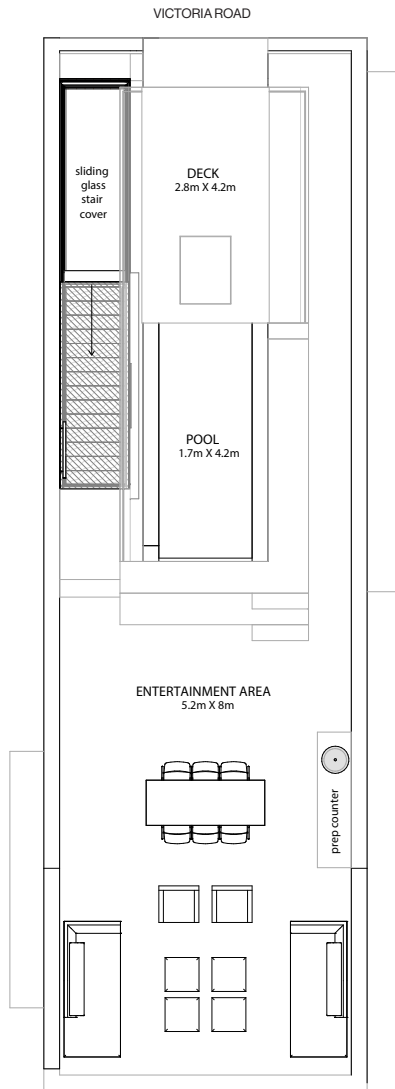






UNIT 5A

Eighth Floor - Entertaining



Level Three
0 Interior
104 Exterior
104 Total



A MESSAGE FROM CHRIS WEYLANDT



Chris Weylandt

“Our aim was to carefully select pieces from our existing ranges that would appeal directly to the Blok customer, carefully considering materials, colours and textures,” explains Chris Weylandt. “However, where there were unique requirements, we found unique solutions, designing and producing several pieces to complete the picture to the highest possible degree of comfort, design and fit.”

The result was a masterful interior. Included in it are the Haiku beds in the guest bedrooms, a custom-made Oslo bed in the master bedroom and the Kappa dining table in

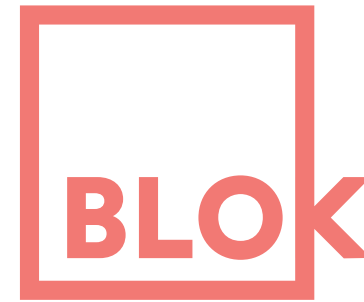
the living area. We, as a contemporary décor and furniture retailer, have always been known for our natural oak timber furniture, and that features prominently, now sporting a specifically formulated darker finish.

Weylandt concludes, “We wanted this penthouse to be world-class, and we have delivered on that by integrating all aspects of the Weylandts brand offering, from highly detailed planning and design, to the delivery and installation of the finest furniture and home-ware.”





THE NEIGHBOURHOOD



WEYLANDTS
HOME OUTFITTERS

